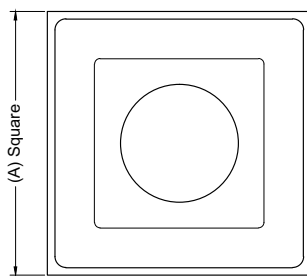


**THERMALLY POWERED PLAQUE DIFFUSER**  
SEPARATELY ADJUSTABLE SET POINTS FOR VAV HEATING & COOLING

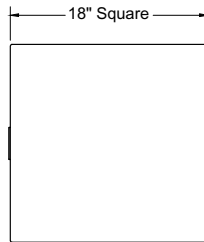
**SUBMITTAL: SCVH**

MODELS:

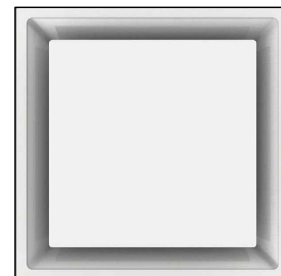
- SCVH-1** Thermally Powered Plaque Diffuser Heating & Cooling Surface Mount W/TBPF
- SCVH-6** Thermally Powered Plaque Diffuser Heating & Cooling T-Bar Lay-In
- SCVH-8** Thermally Powered Plaque Diffuser Heating & Cooling Tegular T-Bar
- SCVH-9** Thermally Powered Plaque Diffuser Heating & Cooling Bolt Slot/Donn Fineline Ceiling Grid



Face View - Panel

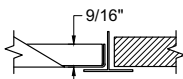


Face View - Plaque Center Panel

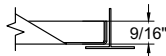


X = Inlet sizes (6", 8", 10" or 12")

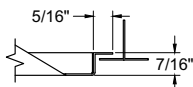
Model	A - Diffuser Panel
SCVH-1	24 3/4"
SCVH-6	23 3/4"
SCVH-8	23 3/4"
SCVH-9	23 3/4"



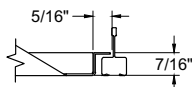
SCVH-1  
(Surface Mount W/TBPF)



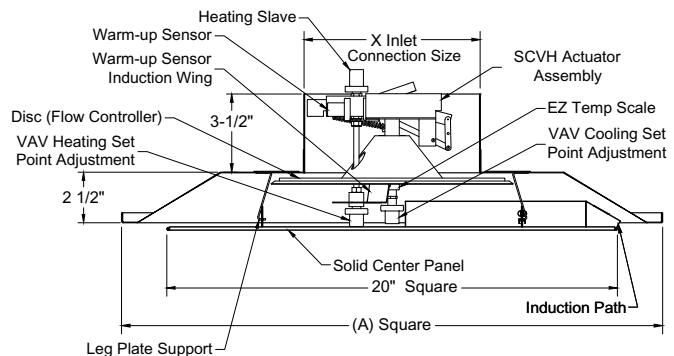
SCVH-6  
(Lay-In Turned Up Edge)



SCVH-8  
(Tegular Lay-In)



SCVH-9  
(Donn Fineline Ceiling Grid)



Induction path

A small amount of supply air is diverted through an orifice against an induction wing then back into primary air path. This creates just enough negative pressure to induce a continuous sample of secondary room air around the edge of the face panel through the induction trough located at the leading edge of the face panel and across the thermal actuator.

Separately adjustable Set-Points for VAV Heating and VAV cooling control. Room air is induced past the thermal actuators, which then adjusts airflow based on space requirements. The actuators are mechanical and require no electrical or pneumatic connectors.

Available Finishes

- 01 White Baked Enamel

Available Accessories

- TBPF - Lay-In Plaster Frame For 1-Units.
- BAF - Directional Baffles
- BPRA - By-Pass Relief Adapter

Standard Construction

- 24 Gauge Electro-Galvanized Steel.
- Panel Size 24 x 24 Only.
- Inlet Sizes 6", 8", 10" or 12".
- Controls: Self-Contained Thermally Activated VAV Control